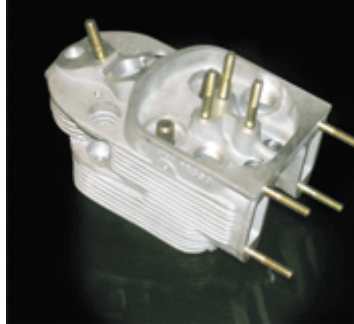
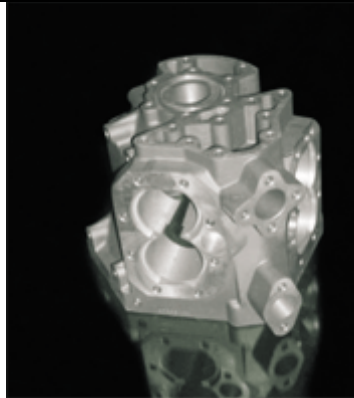
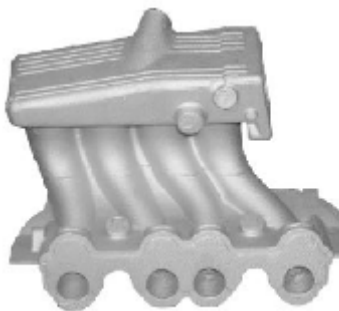
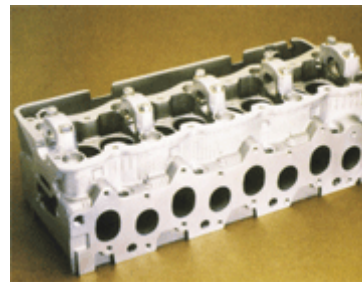
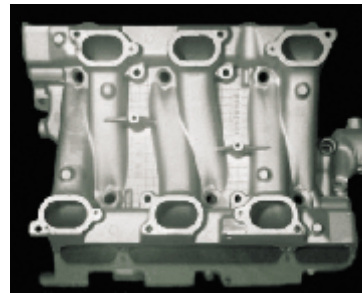
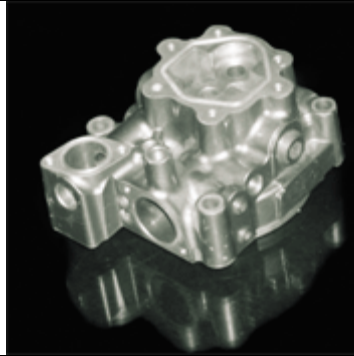
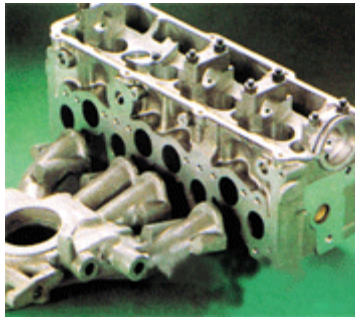
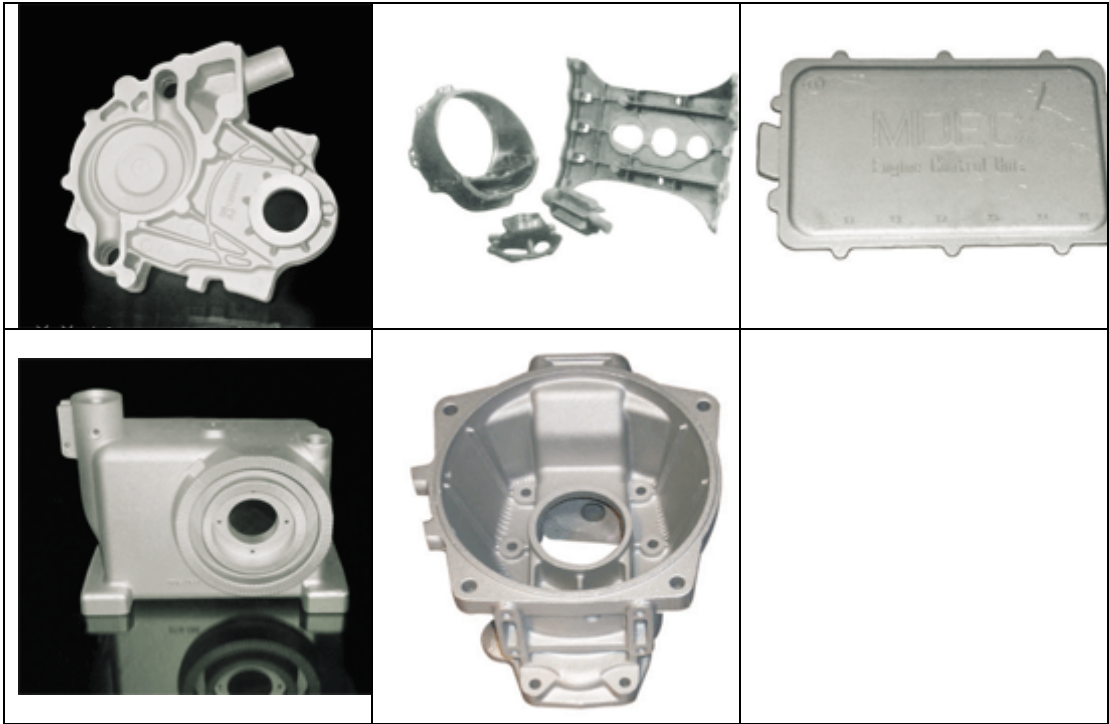


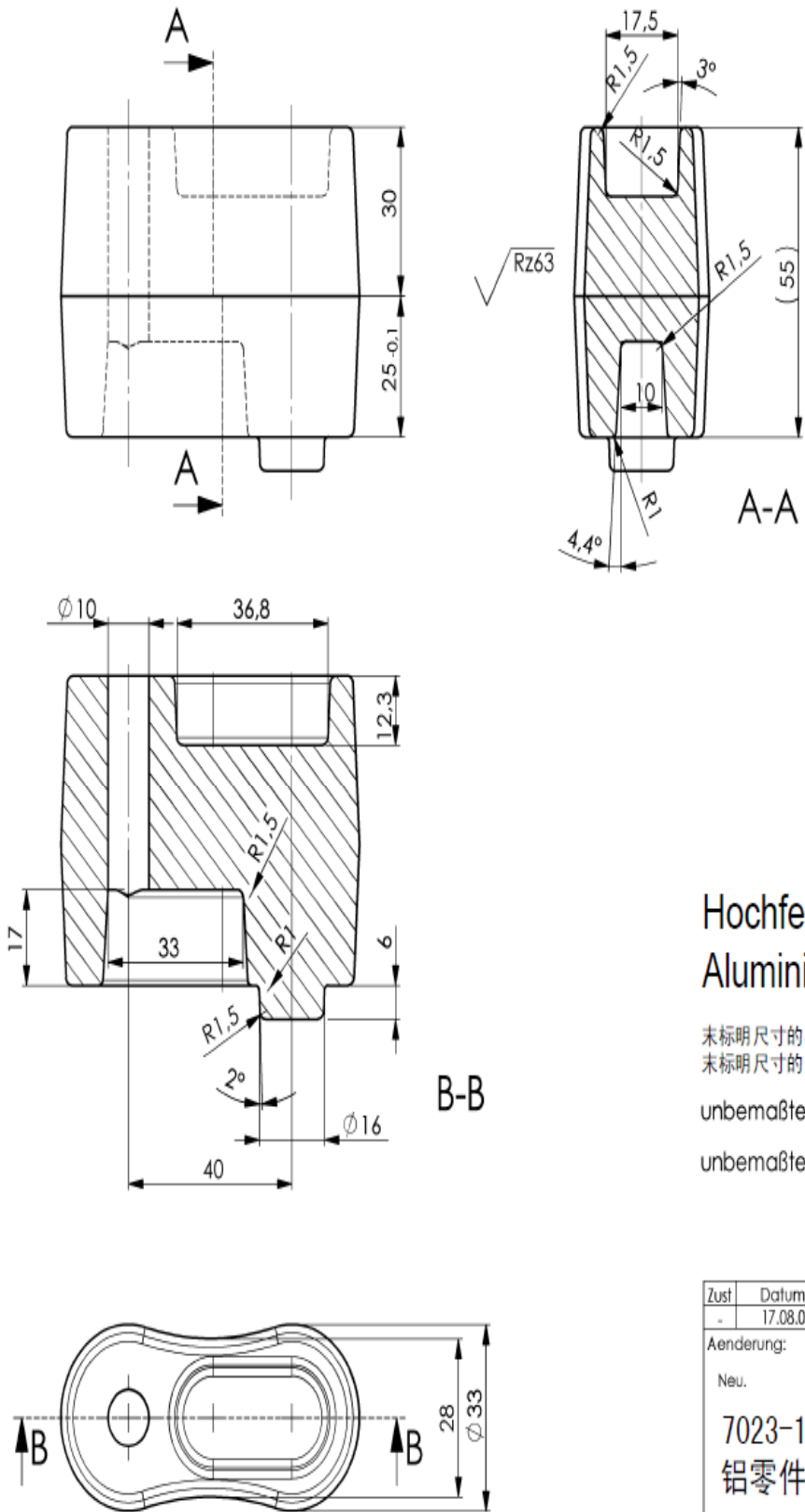
Alu- Guss





M-2584-A3 09/94

Abwärtswartung AV	Technische Leitung T	Freigegeben FR	Hauptentwerfer HA	Kontrolliert KO	Lochformel LA	Montage MO	NC-Prüfung NC	OBMA OS	Schweißarbeiten SF	Stanzarbeiten ST	Kornstrukturen TB	Tafel-Lager TL	Werkzeugbau WB
----------------------	----------------------------	-------------------	----------------------	--------------------	------------------	---------------	------------------	------------	-----------------------	---------------------	----------------------	-------------------	-------------------



Hochfestes Aluminium

未标明尺寸的半径: R 1.5 mm
未标明尺寸的外形斜面: = 3°

unbemaßte Radien R 1,5mm

unbemaßte Formschrägen = 3°

√ Rz63

Zust.	Datum	Name	Zul. Abw.
-	17.08.04	Ebermann	DIN ISO 2768
Änderung:			mH
Neu.			Datum
7023-1			Bearb. 17.08.04
铝零件坯件图			Gepr. *
			Norm
			德国莫克

Für diese Zeichnung gelten die Bestimmungen über den Sch...

